



2021
calendar

saif Work.
Life.
Oregon.



Connect with us

Visit us on **saif.com**.

Watch safety videos and more at **saif.com/youtube**.

Follow us on Facebook, Instagram, LinkedIn, and Twitter.

Sign up for on-demand trainings at **saif.com/learningcenter**.

Sign up for health and safety tips at **saif.com/emailtips**.

How work gets done in Oregon. **saif.com/stories**

Editor: Amy Read

Designer: Brooke Schelar, Good Notion

Illustrator: Brandon Lehor, DHX Advertising

Contributors: Joce Johnson, Lauren Casler

Marketing manager: Lyn Zielinski-Mills

Communication and design director: Mike Watters

Creative services supervisor: Corey Jenkins

This calendar is printed at Lynx Group Inc. in Salem on 80# Sonoma Gloss Book.

The cover is printed on 100# Pace Gloss Cover with 10 percent recycled content.

Oregonians are helpers.

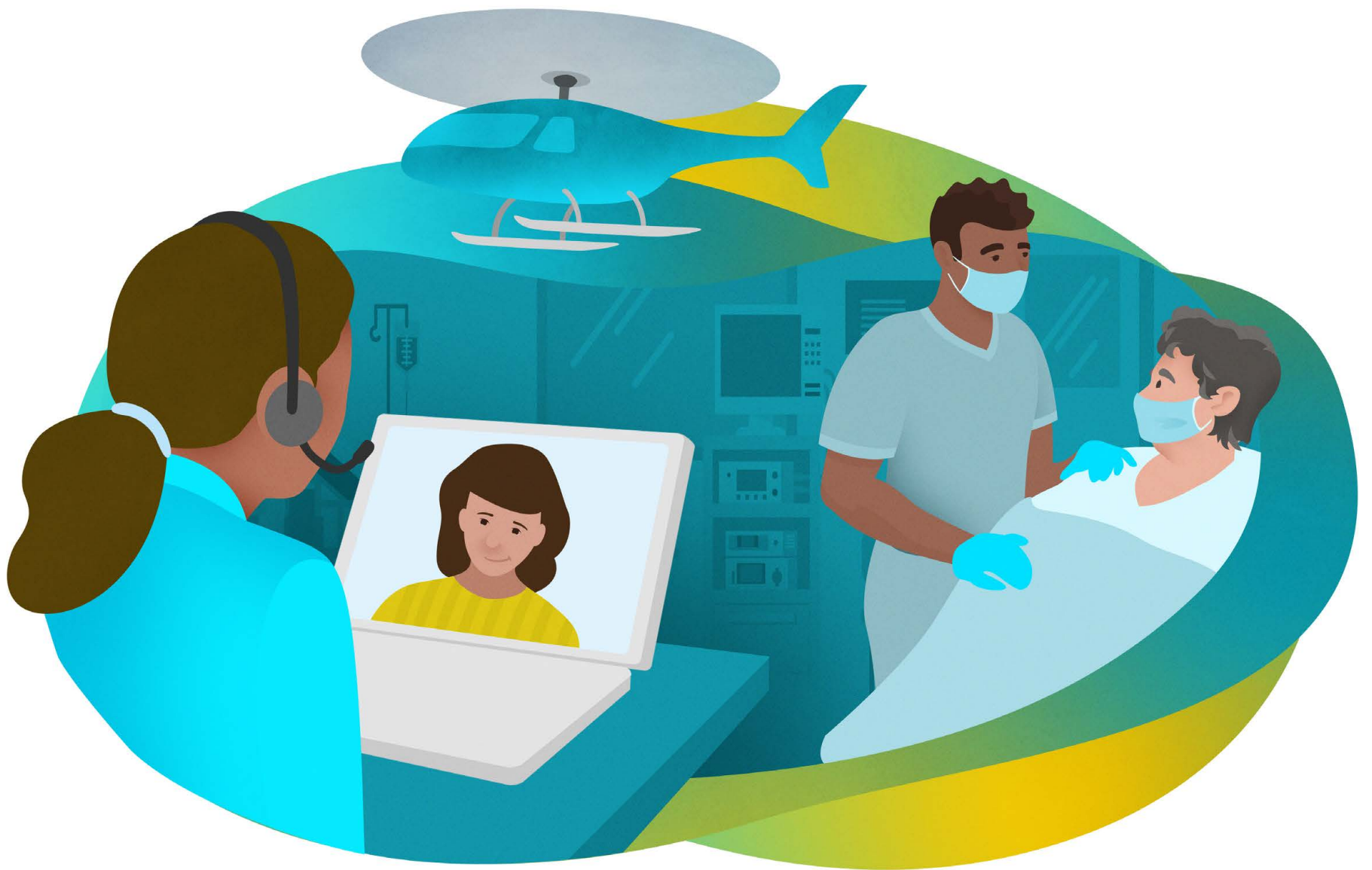
In what can only be described as unprecedented times, Oregon businesses and workers rolled up their sleeves and pitched in, each in their own, unique way.

You'll find 12 examples of that service in these pages.

These businesses gave generously of their time and resources, protected customers and employees, lent a helping hand, or just made time for a simple chat. They found creative ways to be a part of the solution during a global pandemic, and as wildfires devastated many parts of our state. And they did it all while affirming their commitment to safety and health.

In this 15th annual edition of our calendar, you'll see illustrations of Oregon workplaces instead of photographs. While the pandemic limited our visits to virtual ones, we found the work these companies do no less vital and vibrant.

Learn more about the policyholders featured in this calendar at saif.com/stories.



DECEMBER 2020

	1	2	3	4	5	
6	7	8	9	10	11	12
13	14	15	16	17	18	19
20	21	22	23	24	25	26
27	28	29	30	31		

FEBRUARY 2021

	1	2	3	4	5	6
7	8	9	10	11	12	13
14	15	16	17	18	19	20
21	22	23	24	25	26	27
28						

JANUARY 2021

SUNDAY

MONDAY

TUESDAY

WEDNESDAY

THURSDAY

FRIDAY

SATURDAY



1

New Year's Day
SAIF offices closed

2

3

4

5

6

7

8

9

10

11

12

13

14

15

16

17

18

Martin Luther King Jr. Day
SAIF offices closed

19

20

21

22

23

24/31

25

26

27

Holocaust Remembrance Day

28

29

30

saif Work.
Life.
Oregon.

Check out this month's **safety tips**, sign up for **free trainings**, and read more about this Oregon company at **saif.com/stories**.

Mercy Flights | MEDFORD | mercyflights.com

Mercy Flights believes deeply in helping the community.

In September 2020, a wildfire was blazing over the hills toward Mercy Flights' headquarters. As staff discussed evacuation plans, they were called to help transport 50 elderly evacuees from a church in harm's way. Without hesitation, they mobilized, drove toward the danger, and got them to safety.

Meanwhile in an emergency shelter, members of Explorer Post 131, Mercy Flights' EMS training program for 16 to 21 year-olds, set up a triage, assessed what supplies and care were needed, and had the information ready to hand off when doctors arrived.

Calls to the nonprofit air ambulance company tripled during the height of the wildfires. Through it all, team members kept helping, even as their families evacuated or their own homes burned.



JANUARY 2021

1 2
3 4 5 6 7 8 9
10 11 12 13 14 15 16
17 18 19 20 21 22 23
24 25 26 27 28 29 30
31

FEBRUARY 2021

MARCH 2021

1 2 3 4 5 6
7 8 9 10 11 12 13
14 15 16 17 18 19 20
21 22 23 24 25 26 27
28 29 30 31

SUNDAY	MONDAY	TUESDAY	WEDNESDAY	THURSDAY	FRIDAY	SATURDAY
	1	2 Groundhog Day	3	4	5	6
7	8	9	10	11	12 Chinese New Year	13
14 Valentine's Day Oregon's Birthday	15 Presidents Day SAIF offices closed	16 Mardi Gras	17 Lent begins	18	19	20
21	22	23	24	25	26	27
28						



Check out this month's **safety tips**, sign up for **free trainings**, and read more about this Oregon company at saif.com/stories.

Tater Patch Quilts | MERRILL | taterpatchquilts.com

The community spirit is alive and well in Merrill. While the quilting retreats were canceled and the classes are limited for social distancing, Tater Patch Quilts remains a hub of activity for local quilters looking to give back.

When the pandemic hit, the quilt shop stayed open to provide supplies for homemade face masks. Through a grant program, they enlisted the local quilt community to make masks to hand out to anyone who needs one, free of charge.

But while they sell quilt patterns, notions, and fabric, there's something else they offer: "We get a lot of people that just want to come in and talk," says co-owner Diane McKoen. "We are keeping our doors open for any type of customer service we can provide."



FEBRUARY 2021

1 2 3 4 5 6
7 8 9 10 11 12 13
14 15 16 17 18 19 20
21 22 23 24 25 26 27
28

APRIL 2021

1 2 3
4 5 6 7 8 9 10
11 12 13 14 15 16 17
18 19 20 21 22 23 24
25 26 27 28 29 30

MARCH 2021

SUNDAY	MONDAY	TUESDAY	WEDNESDAY	THURSDAY	FRIDAY	SATURDAY
	1	2	3	4	5	6
7	8	9	10	11	12	13
7-13 National Patient Safety Awareness Week						
14 Daylight saving time begins	15	16	17 St. Patrick's Day	18	19	20 Spring begins
21	22	23	24	25	26	27 Passover begins at sundown
28 Palm Sunday	29	30	31			



Check out this month's **safety tips**, sign up for **free trainings**, and read more about this Oregon company at saif.com/stories.

Coastal Farm & Home Supply | ALBANY | CoastalCountry.com

As an essential business, Coastal Farm & Home stores stayed open during the pandemic. But it wasn't business as usual. Changes came in the form of added door greeters, cleaning protocols, masks for employees and customers, distancing measures, boosting online ordering, and implementing curbside pickup.

"It seemed like every week there was something we hadn't thought of. But we have a good system in place, and constant communication," said Peggy Miller, human resources director.

When wildfires caused evacuations across the state, staff sprang into action to get many tons of feed out to displaced animals. One employee lent his farm to evacuees of both the two-legged and four-legged variety. They even provided equipment to firefighters. Giving is part of the company's identity. When they step up, they hope it sparks others to do the same.



MARCH 2021

1 2 3 4 5 6
 7 8 9 10 11 12 13
 14 15 16 17 18 19 20
 21 22 23 24 25 26 27
 28 29 30 31

MAY 2021

1
 2 3 4 5 6 7 8
 9 10 11 12 13 14 15
 16 17 18 19 20 21 22
 23 24 25 26 27 28 29
 30 31

APRIL 2021

SUNDAY	MONDAY	TUESDAY	WEDNESDAY	THURSDAY	FRIDAY	SATURDAY
--------	--------	---------	-----------	----------	--------	----------



1
 April Fools' Day

2
 Good Friday

3

4
 Easter

5

6

7

8
 Yom HaShoah
 begins at sundown

9

10

5-11 | National Public Health Week

11

12
 Ramadan begins at sundown

13

14

15
 Tax Day

16

17

18

19

20

21

22
 Earth Day

23

24

25

26

27

28
 Workers' Memorial Day

29

30

26-30 | National Work Zone Awareness Week



Check out this month's **safety tips**,
 sign up for **free trainings**, and
 read more about this Oregon company at
saif.com/stories.

Oregon Humane Society | PORTLAND | oregonhumane.org

Founded in 1868, Oregon Humane Society's mission is to advocate for all animals through education, legislation, and leadership. The organization rescues, heals, and adopts out more than 11,000 pets each year.

Through a strong online adoption system, these furry Oregonians didn't experience a longer wait for their forever home during the pandemic. The team looked for creative solutions to crucial fundraising efforts, successfully raising funds through telethons, email campaigns, and online programming.

When the wildfires hit, Oregon Humane Society took in pets from shelters in evacuation zones, as well as provided much-needed food and supplies to shelters and individuals across the state. Through planning, innovation, positivity, and support from the community, Oregon Humane Society hasn't lost any momentum in the fight to care for animals and place them in loving homes.



APRIL 2021

			1	2	3
4	5	6	7	8	9
10	11	12	13	14	15
16	17	18	19	20	21
22	23	24	25	26	27
28	29	30			

JUNE 2021

		1	2	3	4	5
6	7	8	9	10	11	12
13	14	15	16	17	18	19
20	21	22	23	24	25	26
27	28	29	30			

MAY 2021

SUNDAY	MONDAY	TUESDAY	WEDNESDAY	THURSDAY	FRIDAY	SATURDAY
--------	--------	---------	-----------	----------	--------	----------



						1
2	3	4	5 Cinco de Mayo	6	7	8

2-8 | North American Occupational Safety and Health Week

9 Mother's Day	10	11	12	13	14	15 Peace Officers Memorial Day Armed Forces Day
-------------------	----	----	----	----	----	---

16	17	18	19	20	21	22
----	----	----	----	----	----	----

23/30	24/31 Memorial Day SAIF offices closed	25	26	27	28	29
-------	--	----	----	----	----	----



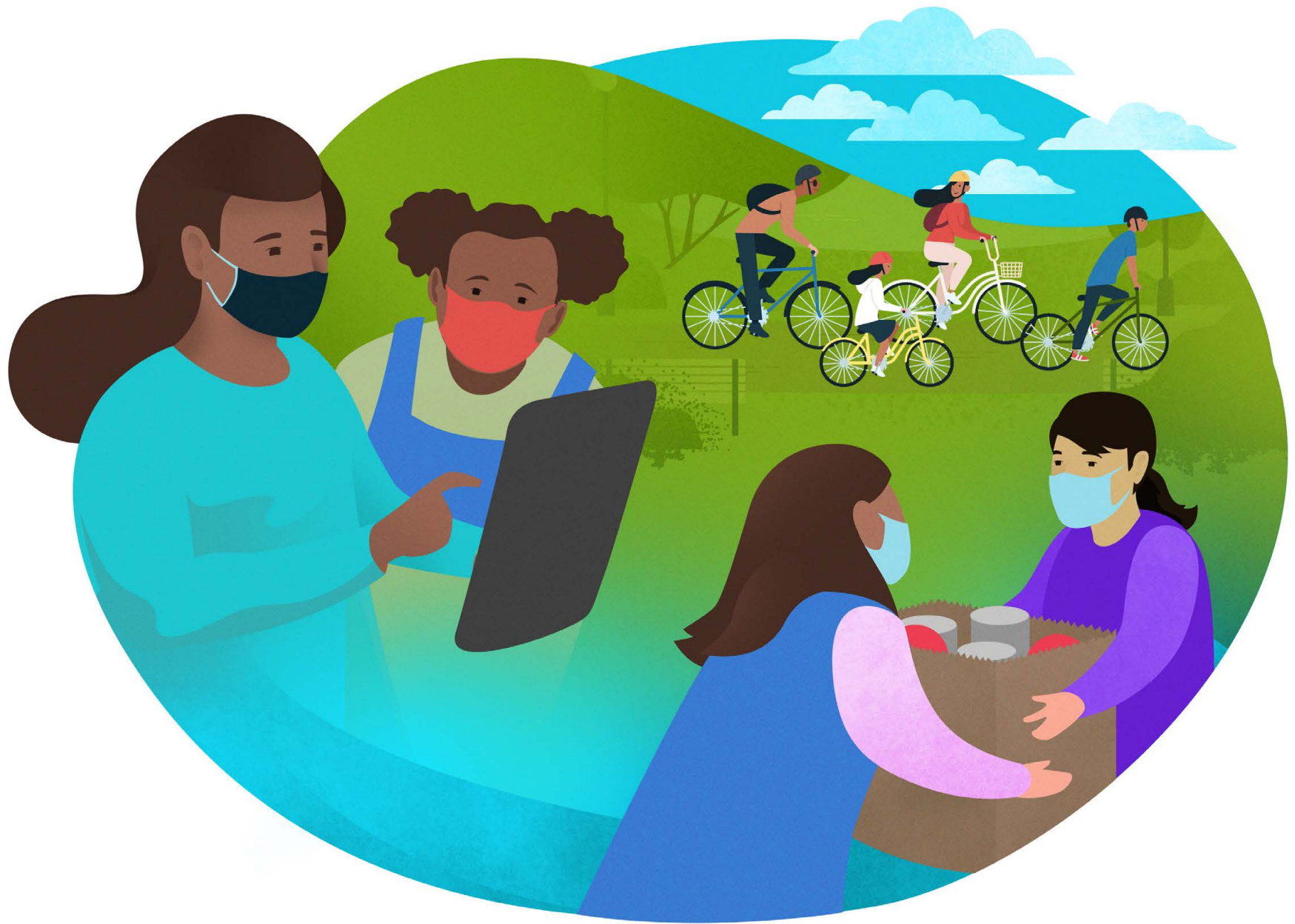
Check out this month's **safety tips**, sign up for **free trainings**, and read more about this Oregon company at saif.com/stories.

Oregon State University | CORVALLIS | oregonstate.edu

Justin Sanders recalls sitting at his table in February 2020. "I was listening to the news and said, 'This is going to be a big deal. We should plan for this to blow up.'"

Sanders, an assistant professor and section head of molecular diagnostics at the Oregon Veterinary Diagnostic Laboratory (OVDL) at Oregon State University, was referring to news of the coronavirus.

When the pandemic hit Benton County, Sanders noticed a lack of coordinated testing at the federal level and wanted to help. The OVDL partnered with Willamette Valley Toxicology Laboratory in April 2020 to begin testing. The partnership tested about 1,000 patients a day across Oregon and even beyond the state border, often with a 48-hour turnaround for results.



MAY 2021

						1
2	3	4	5	6	7	8
9	10	11	12	13	14	15
16	17	18	19	20	21	22
23	24	25	26	27	28	29
30	31					

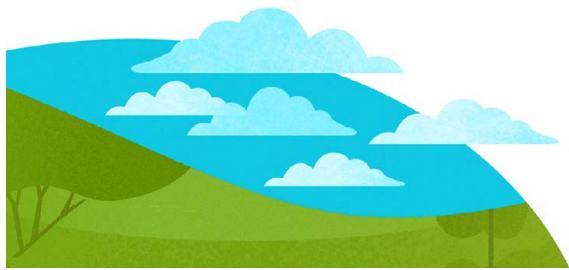
JUNE 2021

JULY 2021

					1	2	3
4	5	6	7	8	9	10	
11	12	13	14	15	16	17	
18	19	20	21	22	23	24	
25	26	27	28	29	30	31	

NATIONAL SAFETY MONTH

SUNDAY	MONDAY	TUESDAY	WEDNESDAY	THURSDAY	FRIDAY	SATURDAY
--------	--------	---------	-----------	----------	--------	----------



		1	2	3	4	5
6	7	8	9	10	11	12
13	14 Flag Day	15	16	17	18	19 Juneteenth
20 Father's Day Summer begins	21	22	23	24	25	26
27	28	29	30			



Check out this month's **safety tips**, sign up for **free trainings**, and read more about this Oregon company at **saif.com/stories**.

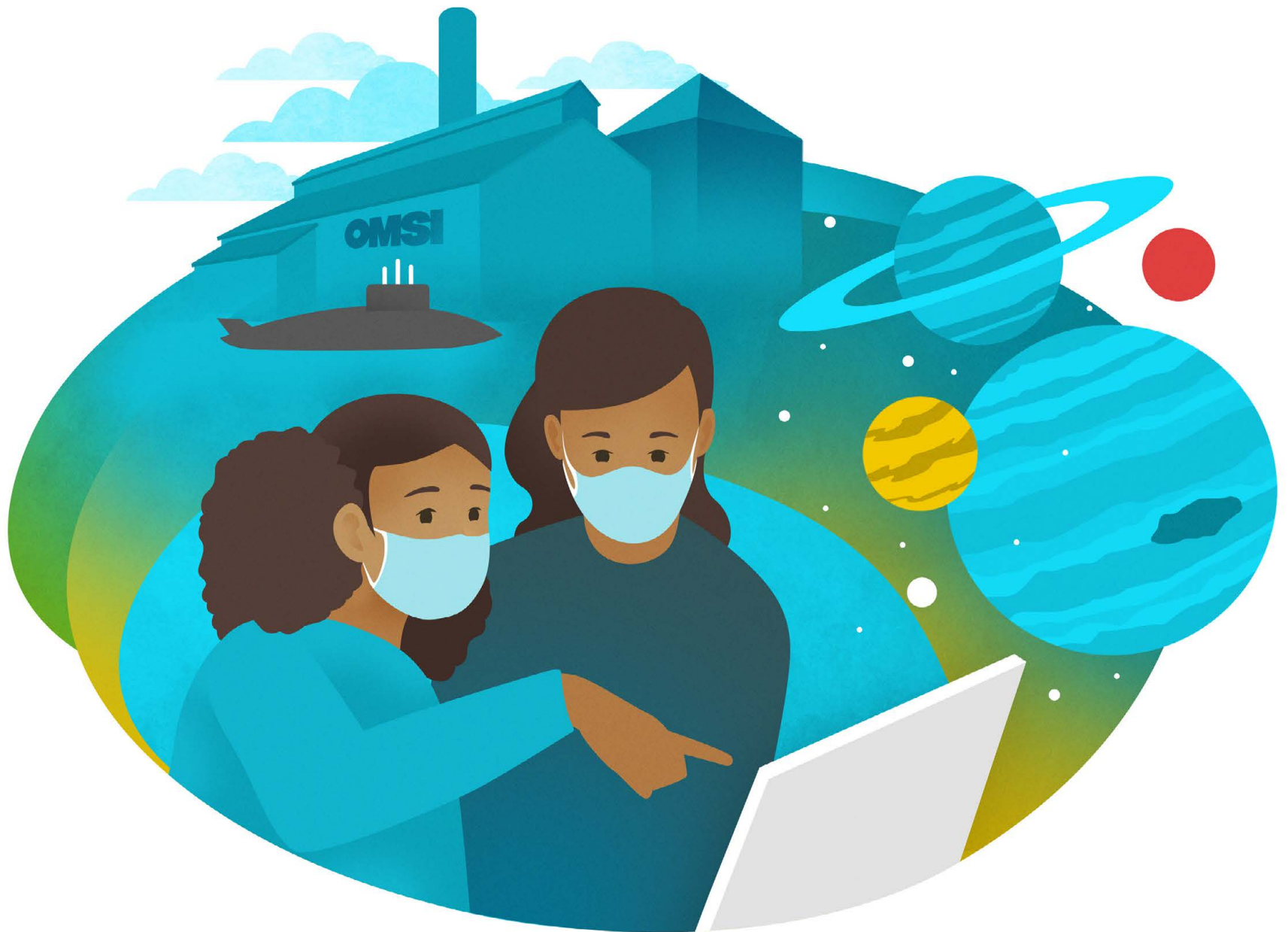
IRCO | PORTLAND | irco.org

A new phone hotline in seven languages that immediately connects clients to services. Drive-by events to distribute donated items, including gift cards for groceries and housewares. Coordinated COVID-19 testing events in areas suspected of outbreak.

If you asked Lee Po Cha to describe the ways the Immigrant and Refugee Community Organization (IRCO) has changed since the onset of the coronavirus pandemic, those would be just the start.

"95% of the client work we do is face-to-face—originally," says Mr. Lee, IRCO's executive director. "We had to rethink and reconstruct how we provided every single service."


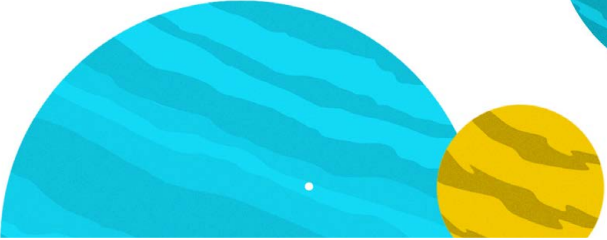
Best of all? Most of the changes and services implemented in the pandemic have become best practices and will stay.



JUNE 2021
 1 2 3 4 5
 6 7 8 9 10 11 12
 13 14 15 16 17 18 19
 20 21 22 23 24 25 26
 27 28 29 30

JULY 2021

AUGUST 2021
 1 2 3 4 5 6 7
 8 9 10 11 12 13 14
 15 16 17 18 19 20 21
 22 23 24 25 26 27 28
 29 30 31

SUNDAY	MONDAY	TUESDAY	WEDNESDAY	THURSDAY	FRIDAY	SATURDAY
			1	2	3	
	4 Independence Day	5 SAIF offices closed	6	7	8	9
10	11	12	13	14	15	16
17	18	19	20	21	22	23
24	25	26	27	28	29	30
31						



Check out this month's **safety tips**, sign up for **free trainings**, and read more about this Oregon company at **saif.com/stories**.

OMSI | PORTLAND | omsi.edu

Bringing immersive hands-on science education online is not an easy task, but the Oregon Museum of Science and Industry did just that in March 2020 when the pandemic hit. The museum launched the Stay Home, Stay Curious website, offering educational and engaging content to help fill the gap when schools closed.

In the fall, they continued building resources for families and educators—including a Science at Home program that centered online science curriculum around weekly themes like ecology, chemistry, and genetics—but they didn't stop with these digital efforts. Recognizing essential workers needed care options for their kids, they sought emergency approval to launch OMSI Homeroom in October 2020, a full-time childcare program at the museum.

"We knew that regardless of how the school year turned out, working families would need a safe place for their students to go while caregivers were working," said Brian Berry, OMSI classes and outreach director. "We're proud to have helped so many students through their online learning, and supplemented their education with fun and engaging science programming."



JULY 2021

			1	2	3
4	5	6	7	8	9
10	11	12	13	14	15
16	17	18	19	20	21
22	23	24	25	26	27
28	29	30	31		

SEPTEMBER 2021

			1	2	3	4
5	6	7	8	9	10	11
12	13	14	15	16	17	18
19	20	21	22	23	24	25
26	27	28	29	30		

AUGUST 2021

SUNDAY	MONDAY	TUESDAY	WEDNESDAY	THURSDAY	FRIDAY	SATURDAY
1	2	3	4	5	6	7
8	9 Islamic New Year begins at sundown	10	11	12	13	14
15	16	17	18	19	20	21
22	23	24	25	26 Women's Equality Day	27	28
29	30	31				



Check out this month's **safety tips**, sign up for **free trainings**, and read more about this Oregon company at **saif.com/stories**.

Huffman & Wright Logging Co. | CANYONVILLE

When the pandemic hit, it left no industry unscathed—even those that fell under the essential business category like Huffman & Wright Logging Co. out of Canyonville.

“There were a lot of questions about what was going to happen,” says partner Butch Wright.

Fortunately, major operations, which include logging and forest road building, were able to continue for the family-owned company as they enacted required precautions, like face masks and extra cleaning. Wright is proud to say that all employees have maintained a steady paycheck through the pandemic.

“Our employees are basically an extension of our family,” he says. “We hope to keep them employed even when it’s hard.”



AUGUST 2021

1	2	3	4	5	6	7
8	9	10	11	12	13	14
15	16	17	18	19	20	21
22	23	24	25	26	27	28
29	30	31				

OCTOBER 2021

						1	2
3	4	5	6	7	8	9	
10	11	12	13	14	15	16	
17	18	19	20	21	22	23	
24	25	26	27	28	29	30	
31							

SEPTEMBER 2021

NATIONAL EMERGENCY PREPAREDNESS MONTH

SUNDAY

MONDAY

TUESDAY

WEDNESDAY

THURSDAY

FRIDAY

SATURDAY

1

2

3

4



5

6

Labor Day
SAIF offices closed

Rosh Hashanah
begins at sundown

7

8

9

10

11

National Day of Service
and Remembrance

12

Grandparents Day

13

14

15

Yom Kippur
begins at sundown

16

17

18

19

20

21

International Day of Peace

22

Fall begins

23

24

25

26

27

28

29

30

saif Work.
Life.
Oregon.

Check out this month's **safety tips**,
sign up for **free trainings**, and
read more about this Oregon company at
saif.com/stories.

The Fruit Company | HOOD RIVER | thefruitcompany.com

The Fruit Company has been growing high-quality fruit and shipping gift packages across the country for more than 75 years. Their mission is simple—to provide joy.

To do that during a pandemic, they had to rethink how to safely work together, from harvesting fruit to adjusting how they served their customers. They sought input from their newest employee to their trusted local public health officials.

Strict rules and the hiring of an officer dedicated to keeping employees safe have allowed them to focus on what they are passionate about—making gifts that are meant to be shared and enjoyed.



SEPTEMBER 2021

	1	2	3	4		
5	6	7	8	9	10	11
12	13	14	15	16	17	18
19	20	21	22	23	24	25
26	27	28	29	30		

NOVEMBER 2021

	1	2	3	4	5	6
7	8	9	10	11	12	13
14	15	16	17	18	19	20
21	22	23	24	25	26	27
28	29	30				

OCTOBER 2021

SUNDAY	MONDAY	TUESDAY	WEDNESDAY	THURSDAY	FRIDAY	SATURDAY
--------	--------	---------	-----------	----------	--------	----------



3	4	5	6	7	8	9
---	---	---	---	---	---	---

3-9 | National Fire Prevention Week

10 World Mental Health Day	11 Indigenous Peoples Day Columbus Day (Federal Holiday)	12	13	14	15	16
-------------------------------	---	----	----	----	----	----

17	18	19	20	21	22	23
----	----	----	----	----	----	----

24/31 United Nations Day Halloween	25	26	27	28	29	30
--	----	----	----	----	----	----



Check out this month's **safety tips**, sign up for **free trainings**, and read more about this Oregon company at saif.com/stories.

Wildish | EUGENE | wildish.com

Handwashing stations built from scratch, trainings on new worksite precautions, and daily calls on implementing safety and health guidelines. These are just some of the steps Wildish took to keep their employees safe. During a busy construction season and an ongoing industrywide worker shortage, Wildish pivoted quickly.

At Wildish, they consider themselves a family, and do what is needed to ensure everyone stays safe and healthy.

That attitude extended to the community after Lane County was hit by wildfires over the summer—employees volunteered for relief events, and the company donated to fire relief to support the greater Eugene/Springfield/McKenzie River Valley area.



IN THE HEART OF THE
SISTERS
COFFEE CO.
OREGON CASCADES

OCTOBER 2021

1 2
3 4 5 6 7 8 9
10 11 12 13 14 15 16
17 18 19 20 21 22 23
24 25 26 27 28 29 30
31

DECEMBER 2021

1 2 3 4
5 6 7 8 9 10 11
12 13 14 15 16 17 18
19 20 21 22 23 24 25
26 27 28 29 30 31

NOVEMBER 2021

SUNDAY	MONDAY	TUESDAY	WEDNESDAY	THURSDAY	FRIDAY	SATURDAY
	1	2 Election Day	3	4	5	6
7 Daylight saving time ends	8	9	10	11 Veterans Day SAIF offices closed	12	13
14	15	16	17	18	19	20
21	22	23	24	25 Thanksgiving Day SAIF offices closed	26 SAIF offices closed	27
28 Hanukkah begins at sundown	29	30				



Check out this month's **safety tips**, sign up for **free trainings**, and read more about this Oregon company at **saif.com/stories**.

Sisters Coffee Company | SISTERS | sisterscoffee.com

What's better than a cup of fresh brewed coffee in the morning? Just one thing: when that freshly brewed coffee is also a conduit to helping Oregonians recover from the impacts of COVID-19.

Sisters Coffee Co. was one of many small businesses forced to adapt in the face of the pandemic. They rearranged the inside of their retail locations to accommodate social distancing, ramped up cleaning and disinfection protocols, and refocused marketing efforts on online sales.

"Grit is one of our core values," says Jesse Durham, who runs the business with her two brothers, Justin and Jared. "We were able to quickly pivot and adapt."

Sisters Coffee Co. also launched the COVID-19 Relief Blend in March 2020. Two dollars of every bag purchased go to the Oregon Community Recovery Fund, which deploys resources to community-based organizations at the front lines of the coronavirus outbreak.



NOVEMBER 2021

1	2	3	4	5	6	
7	8	9	10	11	12	13
14	15	16	17	18	19	20
21	22	23	24	25	26	27
28	29	30				

JANUARY 2022

							1
2	3	4	5	6	7	8	
9	10	11	12	13	14	15	
16	17	18	19	20	21	22	
23	24	25	26	27	28	29	
30	31						

DECEMBER 2021

SUNDAY	MONDAY	TUESDAY	WEDNESDAY	THURSDAY	FRIDAY	SATURDAY
--------	--------	---------	-----------	----------	--------	----------

1 2 3 4



5 6 7 8 9 10 11

Hanukkah ends at sundown

Pearl Harbor Remembrance Day

12 13 14 15 16 17 18

19 20 21 22 23 24 25

Winter begins

Christmas Eve
SAIF offices closed

Christmas Day

26 27 28 29 30 31

Kwanzaa begins

SAIF offices closed

New Year's Eve



Check out this month's **safety tips**, sign up for **free trainings**, and read more about this Oregon company at **saif.com/stories**.

Miller Lumber Company | BEND | mlumber.com

While Miller Lumber had to act quickly to respond to the pandemic, they did it with their values in mind. That's customary for the business that's been operating for more than 100 years—through the Spanish flu pandemic, the Great Depression, two world wars, and the Great Recession.

The community-minded company's core values include keeping their employees safe and treating people with respect. They see their customers and employees as partners.

The building supplier made the decision to temporarily close two of their four lumber yards, relocating employees to their Redmond location—which has been busier than ever serving contractors and, increasingly, do-it-yourselfers working on a wide variety of projects.

PRSRRT STD
US POSTAGE
PAID
SALEM, OR
PERMIT NO. 114

SAIF
400 High St SE
Salem, OR 97312

Connect with us.     

How work gets done in Oregon. saif.com/stories



Mercy Flights | MEDFORD



Tater Patch Quilts | MERRILL



Coastal Farm & Home Supply | ALBANY



Oregon Humane Society | PORTLAND



Oregon State University | CORVALLIS



IRCO | PORTLAND



OMSI | PORTLAND



Huffman & Wright Logging Co. | CANYONVILLE



The Fruit Company | HOOD RIVER



Wildish | EUGENE



Sisters Coffee Company | SISTERS



Miller Lumber Company | BEND