

# Field sanitation for agricultural hand labor

Division 4, Subdivision J



## General requirements

[OAR 437-004-1110](#), Field Sanitation for Agricultural Hand Labor applies only to agricultural work done in crop areas. Work covered under this standard includes weeding, cultivation, picking, sorting, and any other handwork with crops. It also applies to the operation of machinery when working along with hand labor. Another sanitation rule, [437-004-1105](#), applies when work is done in permanent structures.

The employer must provide and pay for everything required by the field sanitation rule. All facilities provided must be clean, safe, and working properly.

### Drinking water

You must provide water that is potable – meaning safe to drink. Water must be clean and free from contaminants whether you get the water from a public source, your own well, or bring it to the field in containers. You must also provide a sanitary way to dispense the water, such as through a fountain or with a spigot into single-use cups. Employees may not use dippers or dip their cups into a common container. Refill and sanitize common water containers as needed. Clearly label any non-potable water sources in work areas that are unsafe for drinking, washing, or for use with food.



### Toilets

Toilets, including chemical, flush, biological, combustion, or sanitary privies, can be fixed or portable. Construction and location of onsite fixed or portable toilets must comply with the rules of the Department of Environmental Quality – [Onsite Wastewater Systems](#) and [Construction Standards](#). All toilet structures must have doors that latch from the inside, adequate ventilation and screens; and be maintained in a safe, sanitary condition. Where there are no separate urinals, toilet seats must be hinged and have the ability to be raised and lowered.

- You must provide at least one toilet for every 20 workers or portion of 20.
- Where possible, provide separate toilets for men and women and label them using a language or symbols easily understood by the workers.
- Toilets must be within a five-minute or one-quarter mile unobstructed walk for all workers.
- There must always be enough toilet paper.
- Each toilet seat must have a toilet paper holder or dispenser.

### Hand-washing facilities

A hand-washing facility must include an adequate supply of potable water, soap, and single-use towels. You may not substitute chemical hand cleaners for the soap and water. There must be one hand-washing facility for every 20 workers or portion of 20. Hand-washing facilities must be next to the toilet facilities. You must provide a covered garbage container for used paper towels.



**DCBS**

Consumer and  
Business Services  
Oregon OSHA

Salem Central Office  
350 Winter St. NE  
Salem, OR 97301-3882

Phone: 503-378-3272  
Toll-free: 800-922-2689  
Fax: 503-947-7461

**Field sanitation notice**

You must post Oregon OSHA's [field sanitation notice](#) for workers who do hand labor on crops intended for human consumption. A good location to post the notice is at each toilet and hand-washing facility or where the field workers congregate. You can order our field sanitation notice on weather resistant paper [in English](#) and [in Spanish](#).

**Employer's responsibility**

You must notify every employee of the location of the sanitation facilities required by [OAR 437-004-1110](#) and allow employees to use the sanitation facilities as needed. You must train all field workers on good hygiene practices to minimize exposure to the hazards in the field including heat illness, communicable diseases, and exposure to pesticide residues. Include at least the following instruction in your training:

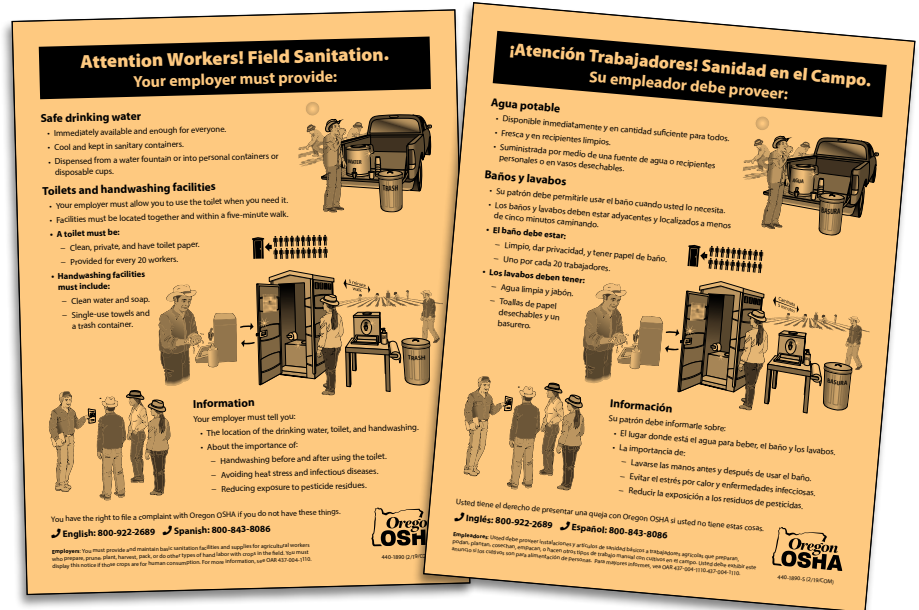
- Drink water frequently, especially on hot days.
- Use the facilities provided as frequently as necessary.
- Wash hands both before and after using the toilet.
- Wash hands before eating and smoking.

If your field workers come in contact with pesticide-treated plants or soil, the additional requirements for training and decontamination in [Division 4/W, Worker Protection Standard](#) may apply.

**Resources**

This fact sheet provides general guidance about the major points of the field sanitation rule for agricultural hand labor. More information is available on Oregon OSHA's [Sanitation topic page](#), including:

- [Interpretation](#) on waterless hand sanitizer use versus washing hands
- Rule: [4/J, Work Environment](#)
- Posters: Field sanitation in [English](#) and [Spanish](#)
- Publication: [Safe practices when working around hazardous agricultural chemicals](#)



The Technical Section of Oregon OSHA produced this fact sheet to highlight health and safety programs and rules. The information is intended to supplement the rules and provide best practices to employers.